

Timber pivot door with sensor door handle, GENIUS and IO module smart



Sensor door handle

- Innovative solution for opening from the inside of the door combined with superior quality design
- Suitable for locking and unlocking using GENIUS or A-opener
- Intuitive and easy operation
- Optical, acoustic and haptic feedback
- Particularly fast opening time of less than 1 second thanks to the intelligent proximity sensors
- No need for lever handle or cylinder lock
- Mechanical unlocking possible at any time
- Activation of daytime release and child-proof lock directly using the sensor door handle
- Additional features can be controlled via the SIEGENIA Comfort app (e. g. party mode)
- Colours: RAL 9010, RAL 9005, stainless steel appearance

Production benefits

- Suitable for aluminium, timber and PVC doors
- Error-free, optimised installation thanks to Plug & Play installation
- Connection to GENIUS or A-opener thanks to plug connection with reverse polarity protection
- Optional: spacer frame for installation in narrow profiles
- Space-saving warehousing

Timber pivot door with sensor door handle, GENIUS and IO module smart



AS 2600 GENIUS

- Fast and quiet electronic locking and unlocking of all locking elements, including the deadbolt in the main lock
- Permanent locking monitoring and readiness for operation
- Future-proof SI-BUS technology with 128-bit AES encryption
- Optimum sealing thanks to a powerful gear motor: lower energy costs, protection against warping
- Can be easily combined with the SIEGENIA access control systems: fingerprint scanner, keypad, transponder and sensor door handle
- Future-proof due to remote system updates and extensions

Production benefits

- Identical milling dimensions as in standard KfV multi-point locks
- Narrow installation width of just 16 mm and installation depth of as little as 52.5 mm
- Ultra-easy ordering, installation and commissioning due to optional plug & play solutions
- Menu navigation and status messaging in installed state by colour LEDs and/or SIEGENIA Comfort app



EPD*:

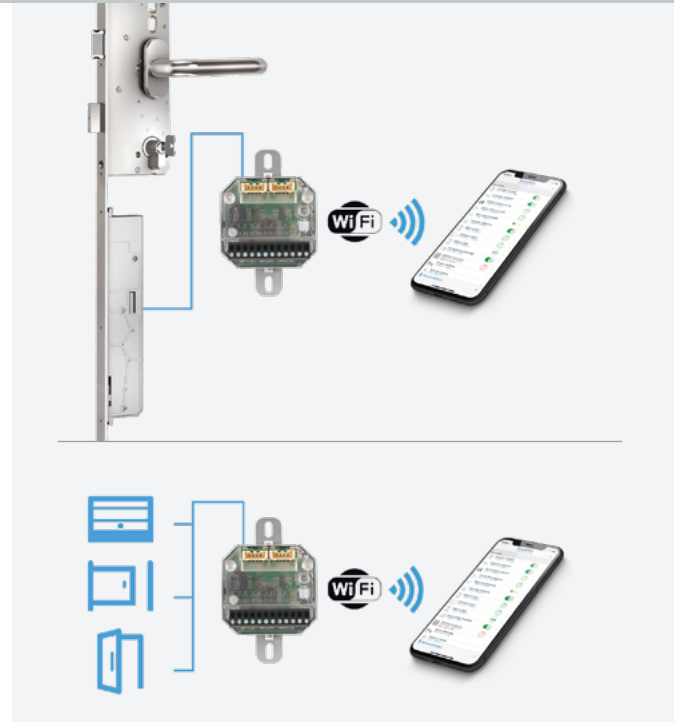
[Environmental Product Declaration](#)
[Electromechanical locks](#)

* Environmental Product Declaration (EPD): a document that provides transparent information about the environmental impact of a product during its service life.



More information:
[GENIUS Product page](#)

Timber pivot door with sensor door handle, GENIUS and IO module smart



IO module smart

- GENIUS electromechanical multi-point locks and A-opener motor as well as DRIVE CL tilt-locking drive controlled and monitored via the SIEGENIA Comfort app
- Optional analogue interface for integration of external products like burglary alarm system or video doorbell system
- Intelligent status display

Production benefits

- SI-BUS interface for digital, encrypted communication
- Two potential-free inputs
- Three potential-free outputs
- Compact design for on-wall or in-wall mounting
- Installation in standard cavity wall boxes and flush-mounted boxes



More information:

[IO module smart product page](#)